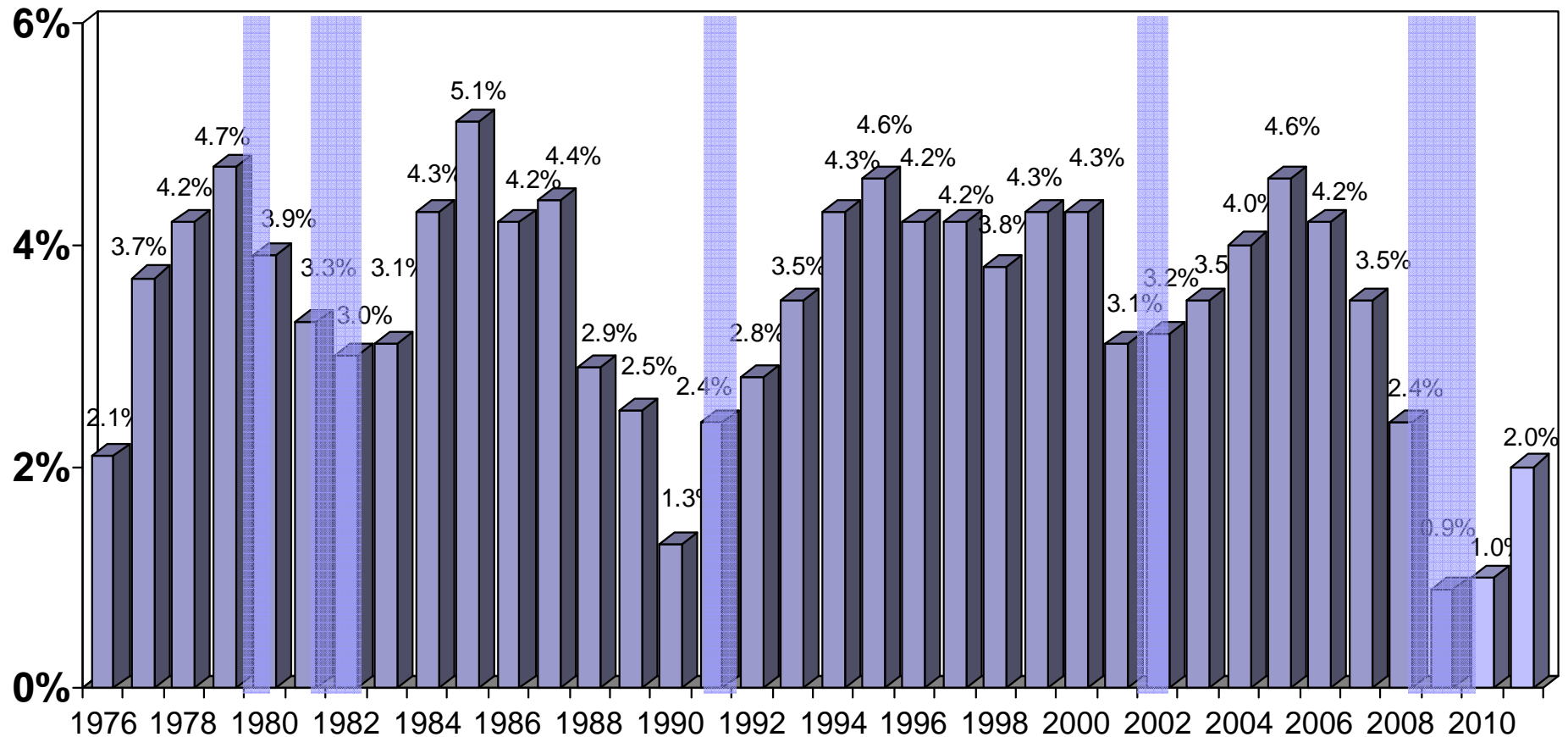


Greater Phoenix Population Annual Percent Change 1976–2011*

Source: Arizona State University & Department of Commerce, Research Administration



2009 is an estimate put out by ADES and may be subject to substantial revision.

*2010 & 2011 forecast is from *Elliott D. Pollack & Co.*

 Recession Periods



Elliott D. Pollack & Company